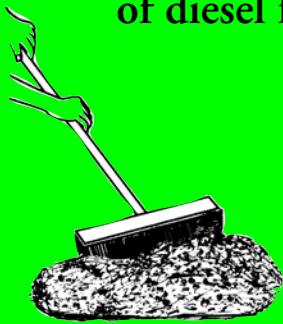


# BASED ON 5 GALLON SPILL

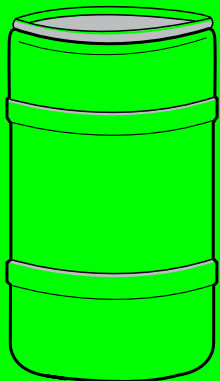
## HTP

### ON ANY SURFACE

ONE  
18 - 20 lb. bag  
will solidify  
5 gallons  
of diesel fuel.



Sweep up  
5 gallon spill  
in minutes  
with no oil  
leaching.



Use less HTP.  
Less Disposal cost.

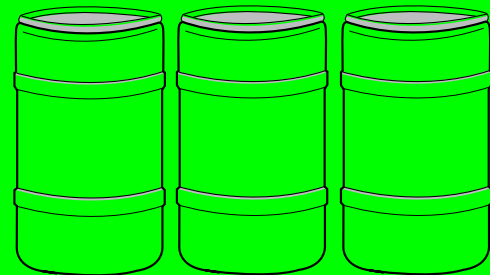
## CLAY GRANULARS

### ON DRY SURFACE ONLY



5/40 lb. bags of  
clay granulars  
will not solidify  
the diesel fuel.

Shovel up 200 lbs. of clay  
granulars. Lengthy and messy  
cleanup. 3 times more  
volume. More labor.  
Leaching occurs.



Use more clay granulars. 3 times more  
volume. Disposal cost is higher.

## BOTTOM LINE

### HTP® WILL DO IT ALL

#### HTP® WILL SAVE YOU EVEN MORE BY REPLACING:

1. Ineffective Clay absorbent products that don't work for today's environment.
2. Ineffective Oil Absorbent Pads.
3. Ineffective Oil Containment socks.
4. Ineffective Oil Containment Booms.
5. Ineffective Spill Kits.
6. Reduce man hours by reducing clean up time.

# How Other Absorbents Compare to HTP®

*To Absorb 1 Quart of 10/30 Wt. Motor Oil*

Product	Amount	
HTP®	1 Lb.	No Leaching
Recycled Pulp	2.5 Lbs.	Leaching Occured
Corn Cob	6 Lbs.	Leaching Occured
Clay	10 Lbs.	Leaching Occured
Polypropylene	4 Pads	Leaching Occured

*\*Approximate prices based on quantities ordered.  
Discounts on larger quantities may apply.*

Product Properties	Clay	Corn Cob	Recycled Pulp	Poly	HTP®
Biodegradable		X	X		Biodegraded State
Bioremedial*					X
Non-Abrasive		X		X	X
Non-Leaching					X
Vapor Suppression					X
Non Carcinogenic		X	X	X	X
Repels Water					X

*\*Contains Hydrocarbon (Oil, Gas, Grease) Eating Microbes*

# HTP

## Chemicals Absorbed

Acetone	Ethyl Ether	Oil Base Ink
Acetonitrile	Ethylene Glycol	Paint Thinners
Amyl Acetate	Gasoline	Parafin Oil
Benzene	Heptane	Pentane
Brake Fluid	Hexane	Pentachlorophenol
Bromodichloromethane	Hexachlorobenzene	Phenol
Bromoform	Hexachlorobutadiene	Polymers
Bunker C	Hexachloroethane	Propanol
Butanol	Hexene	Resins
2 - Butanone	Hydraulic Oil	Scintillation Liquid
Canola Oil	Isobutanol	Silicon Oils
Carbon Disulfide	Isoprene	Solvents
Carbon Tetrachloride	Isopropanol	Styrene
Choloform	Jet Fuels	Tetrachloroethane
Chloromethane	Kerosene	Tetrachloroethylene
Chlorobenzene	Methanol	Tetrahydrofuran
Corn Oil	Methylene Chloride	Toluene
Cutting Oils	Methyl Ethyl Keytone	Transmission Fluid
Cyclohexane	Methylphenol	Trichloroethylene
Dichlorobenzene	Motor Oils	Trichlorophenol
Dichloromethane	Napthalene	Varsol
1,2 - Dichloroethane	2 - Nitroanaline	Vinyl Acetate
Diesel Fuels	Nitrobenzene	Vinyl Chloride
Ethanol	Oil Base Paints	Xylenes
Ethylbenzene	Oil Base Driving Fluids	

\* Encapsulates Heavy Metals

---

**General Data:** Absorption: up to 12 times its weight. Reaction Time: instant. Retention: meets leachate standards. Toxicity: non-toxic, environmentally safe. Disposal: incineration or landfill in accordance with regulatory authority guidelines. Products absorbed: polychlorinated biphenyls (PCBs), fuel oil, aviation fuel, oil-based paints, crude oil, oil-based inks, vegetable oils.

---

# **AMERICAN PRODUCTS ENTERPRISES, INC.**

P.O. Box 268 Woodstock, Georgia 30188

Toll Free: 1-800-340-3866 • Toll Free Fax: 1-877-398-9840

Int'l Tel.:772-370-1251 • Int'l Fax: 770-924-8765

web site: [www.spillresponsekits.com](http://www.spillresponsekits.com)